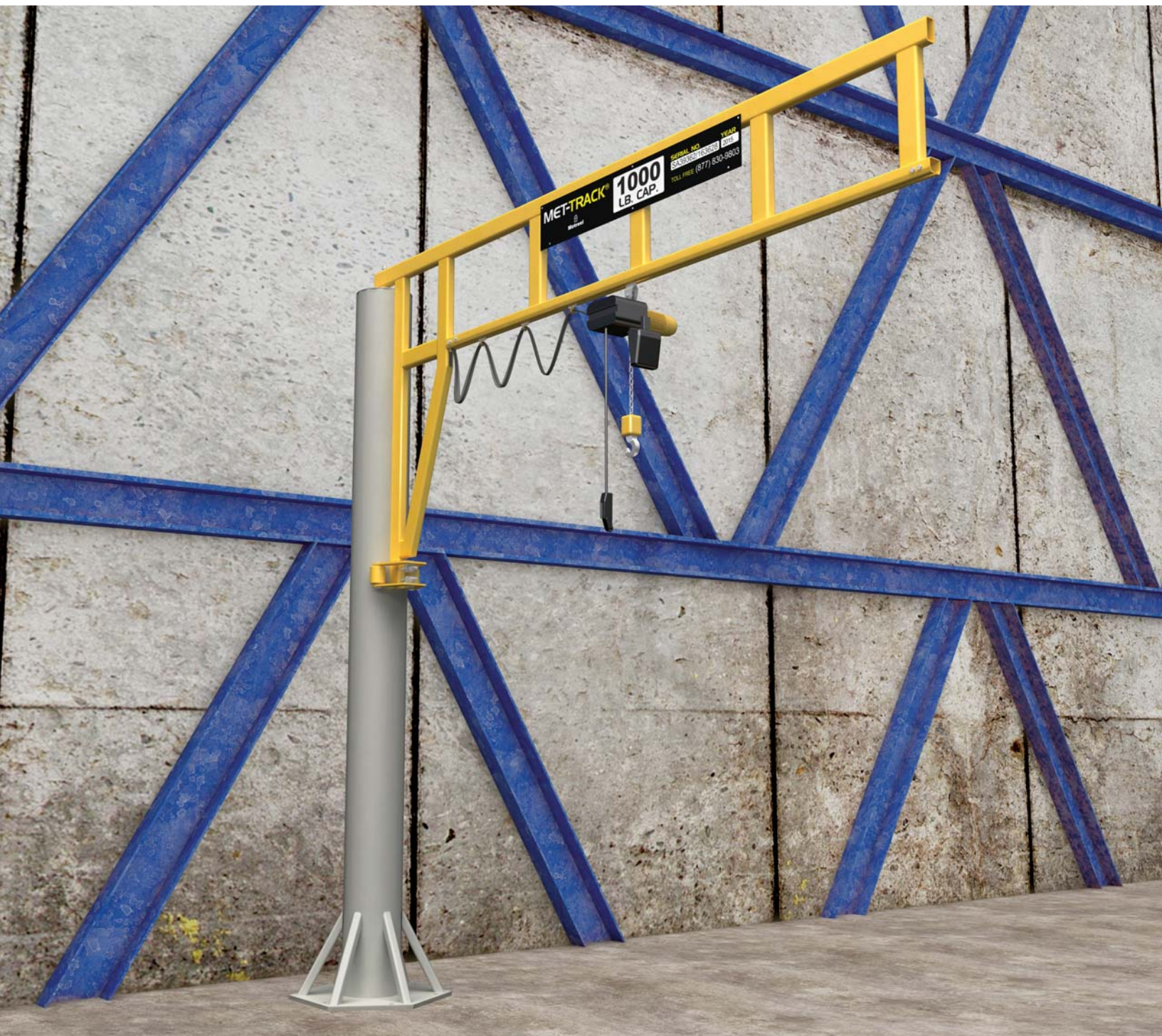


# WORKSTATION JIB CRANES

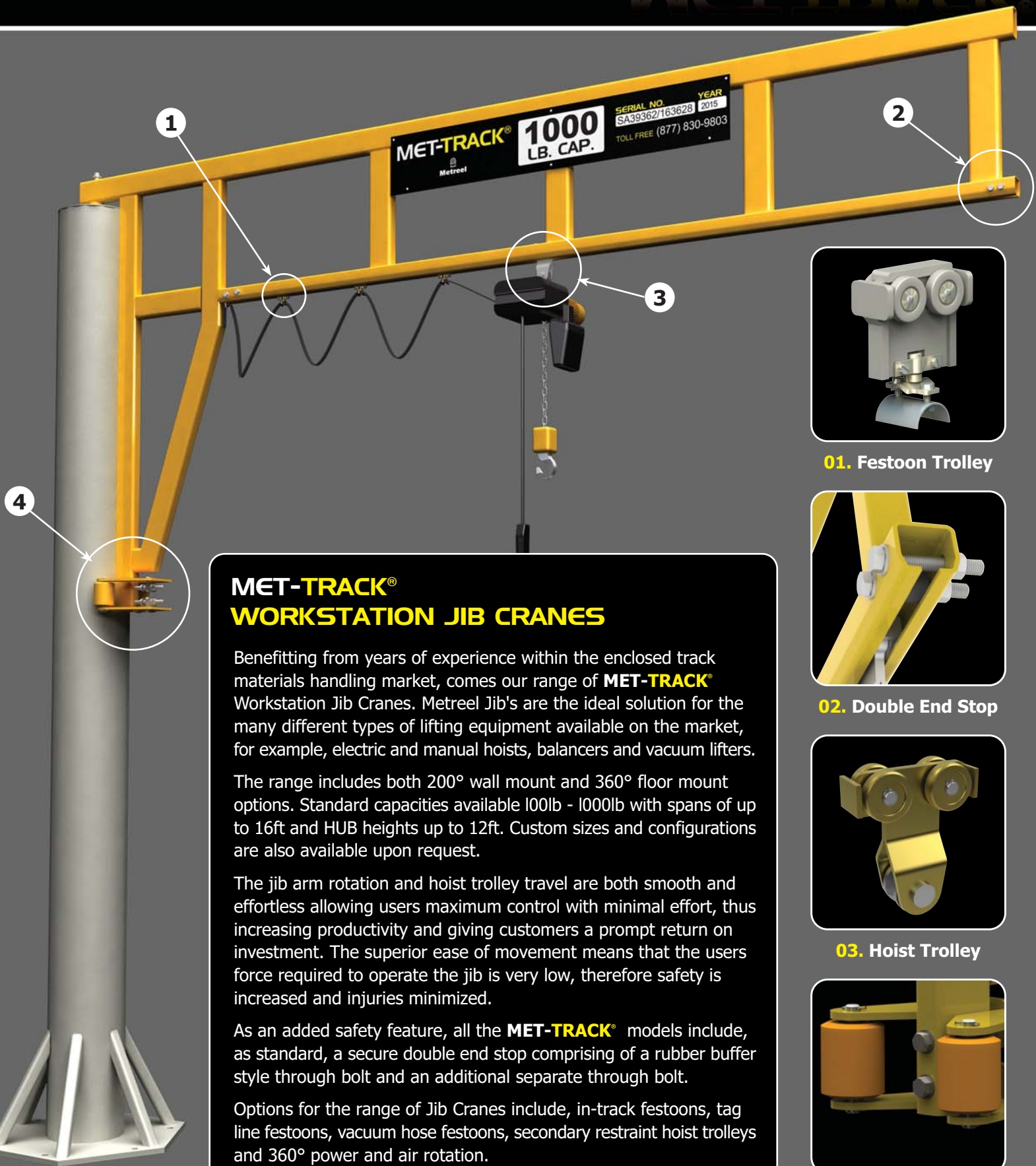
KIT FORM CRANES MANUFACTURED TO YOUR SPECIFICATION



**FLOOR & WALL MOUNTED**  
CAPACITIES UP TO 1000 LBS  
SPANS UP TO 16'  
[www.metreel.com](http://www.metreel.com)

**MET-TRACK®**





## MET-TRACK® WORKSTATION JIB CRANES

Benefitting from years of experience within the enclosed track materials handling market, comes our range of **MET-TRACK®** Workstation Jib Cranes. Metreel Jib's are the ideal solution for the many different types of lifting equipment available on the market, for example, electric and manual hoists, balancers and vacuum lifters.

The range includes both 200° wall mount and 360° floor mount options. Standard capacities available 100lb - 1000lb with spans of up to 16ft and HUB heights up to 12ft. Custom sizes and configurations are also available upon request.

The jib arm rotation and hoist trolley travel are both smooth and effortless allowing users maximum control with minimal effort, thus increasing productivity and giving customers a prompt return on investment. The superior ease of movement means that the users force required to operate the jib is very low, therefore safety is increased and injuries minimized.

As an added safety feature, all the **MET-TRACK®** models include, as standard, a secure double end stop comprising of a rubber buffer style through bolt and an additional separate through bolt.

Options for the range of Jib Cranes include, in-track festoons, tag line festoons, vacuum hose festoons, secondary restraint hoist trolleys and 360° power and air rotation.



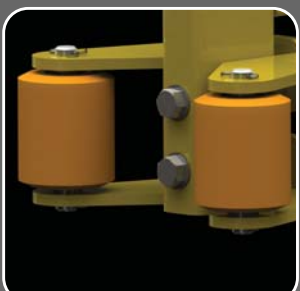
01. Festoon Trolley



02. Double End Stop



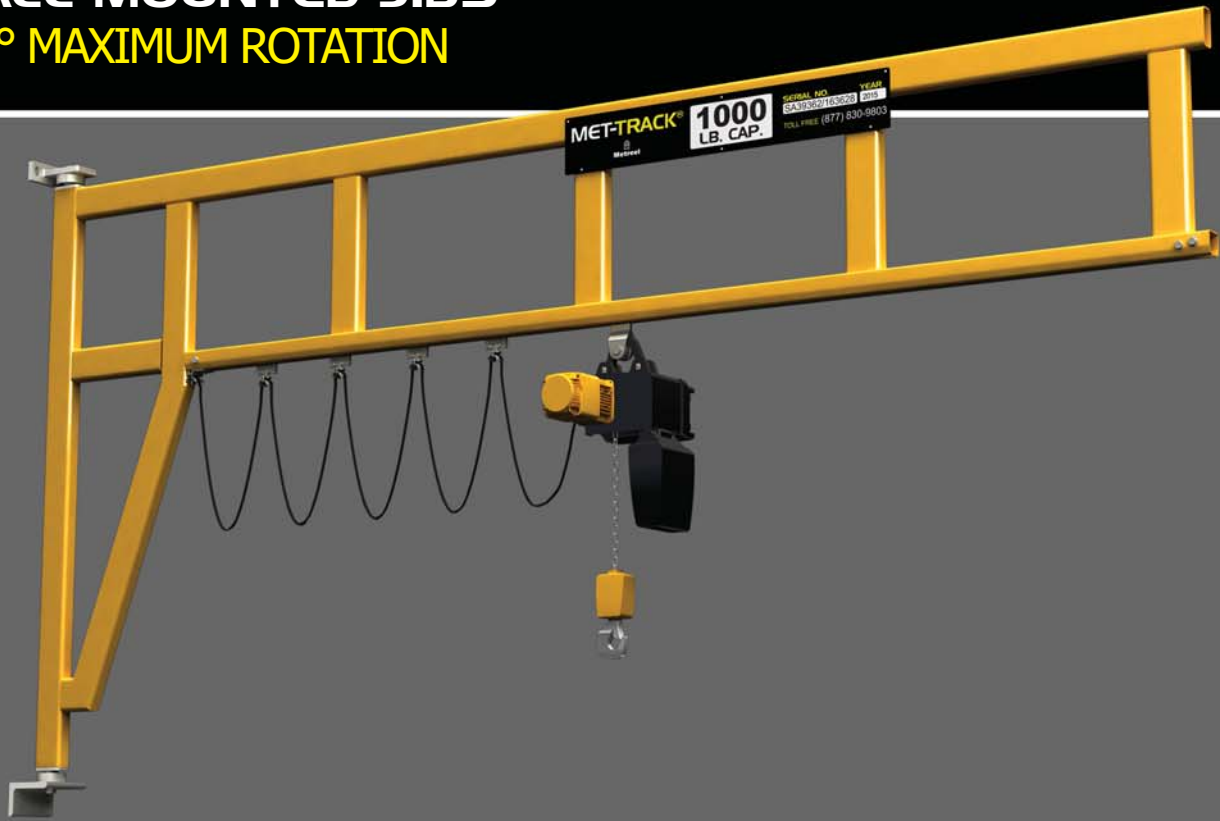
03. Hoist Trolley



04. Roller Assembly

# WALL MOUNTED JIBS

## 200° MAXIMUM ROTATION



### MET-TRACK® WALL MOUNT JIB

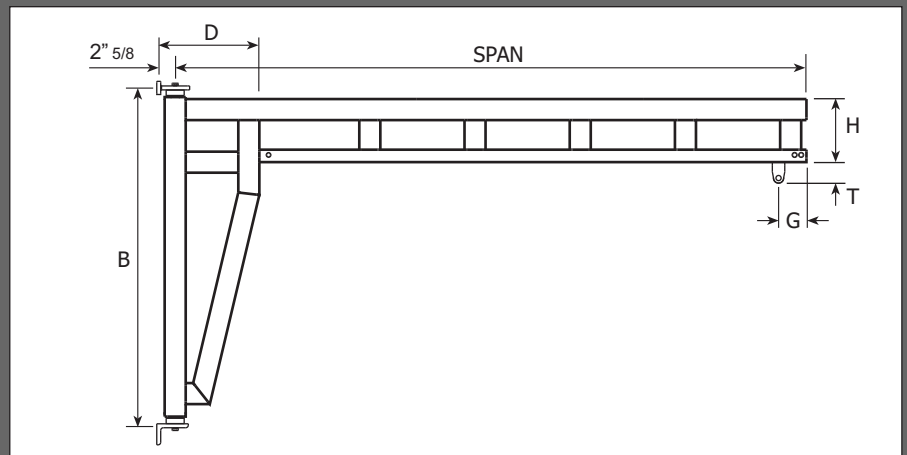
The **MET-TRACK®** range are suitable for fixing direct to a column or a wall. The efficient design of these workstation jibs increases the options of localised lifting in all types of workshop environments.

The design keeps the weight of the arm itself to a minimum which greatly reduces the effort required for operation; this is then enhanced by precision bearings on the base bracket which combine to offer a tool that everyone would be happy to use.

Ensuring the jib arm is level is very important to make sure the effort required by the user is minimized. If your structure is not completely level, the use of shims (not supplied) can be used to level the brackets in a simple no fuss manner.



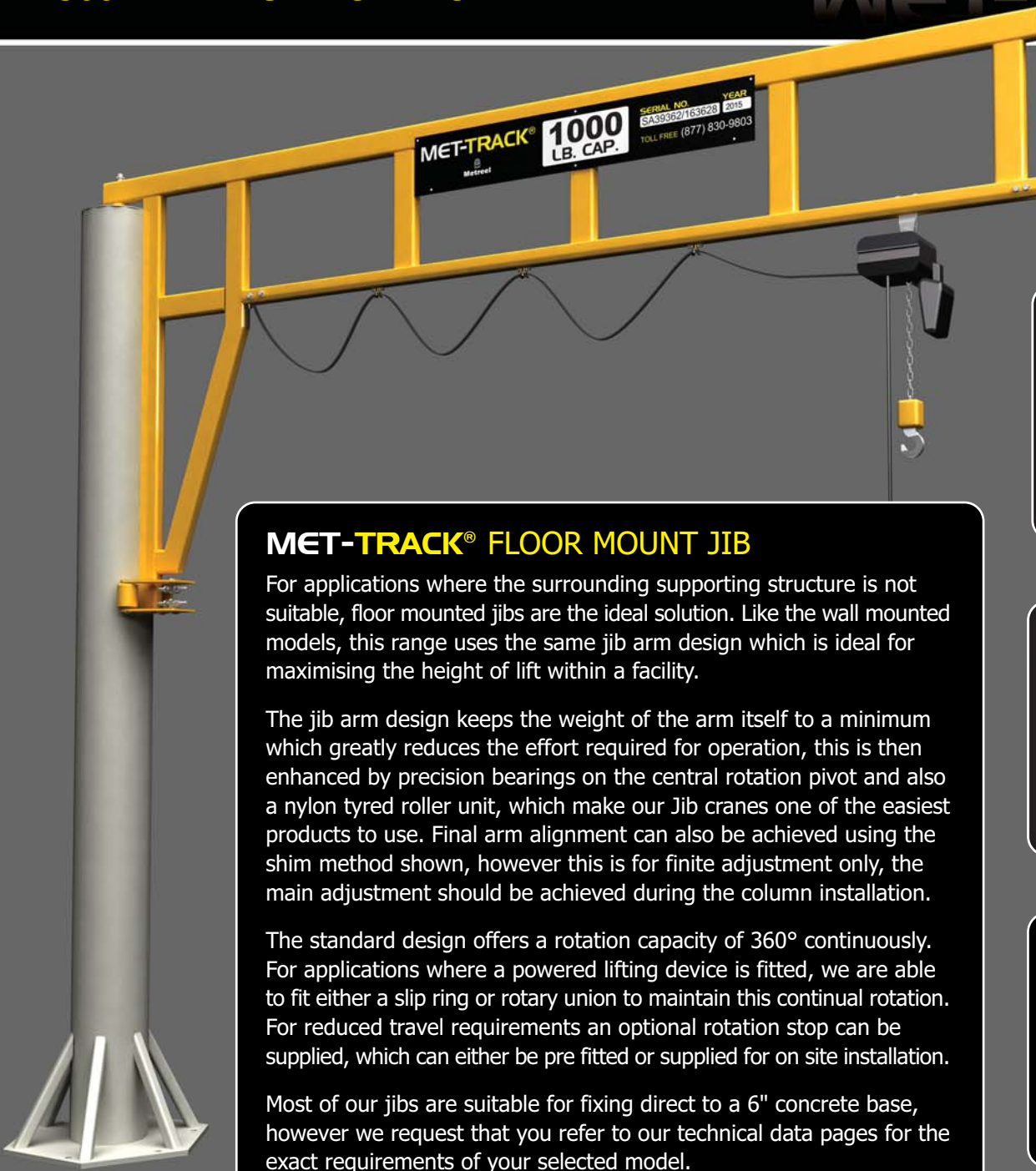
MODEL NUMBER	SWL	SPAN	TRACK SIZE	DIM B (ins)	DIM H (ins)	DIM T (ins)	DIM D (ins)	DIM G (ins)	OVERALL WEIGHT (lbs)
JIABW2-8-250	250	8	400	50 3/4	10 3/4	2 1/2	10	5 3/16	87
JIABW2-10-250	250	10	400	60 3/4	15 1/4	2 1/2	14	5 3/16	103
JIABW2-12-250	250	12	400	60 3/4	16 3/4	2 1/2	14	5 3/16	133
JIABW2-14-250	250	14	400	76 3/4	20 3/4	2 1/2	18	5 3/16	151
JIABW2-16-250	250	16	400	76 3/4	20 3/4	2 1/2	18	5 3/16	180
JIABW2-8-500	500	8	500	61 5/8	22 1/2	3	14	6 3/16	189
JIABW2-10-500	500	10	500	61 5/8	22 1/2	3	14	6 3/16	213
JIABW2-12-500	500	12	500	75 5/8	24 1/2	3	18	6 3/16	264
JIABW2-14-500	500	14	500	75 5/8	24 1/2	3	18	6 3/16	303
JIABW2-16-500	500	16	500	75 5/8	24 1/2	3	18	6 3/16	327
JIABW2-8-1000	1000	8	600	65 5/8	22 1/2	3 11/16	16	6 7/8	210
JIABW2-10-1000	1000	10	600	65 5/8	22 1/2	3 11/16	16	6 7/8	264
JIABW2-12-1000	1000	12	600	75 5/8	28 1/2	3 11/16	18	6 7/8	319
JIABW2-14-1000	1000	14	600	75 5/8	28 1/2	3 11/16	18	6 7/8	366
JIABW2-16-1000	1000	16	600	75 5/8	28 1/2	3 11/16	18	6 7/8	403



# FLOOR MOUNTED JIBS

## 360° MAXIMUM ROTATION

# MET-TRACK®



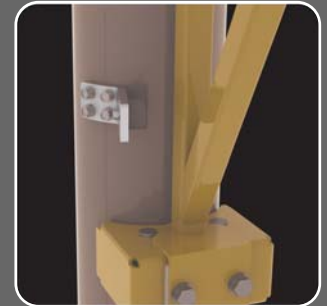
### MET-TRACK® FLOOR MOUNT JIB

For applications where the surrounding supporting structure is not suitable, floor mounted jibs are the ideal solution. Like the wall mounted models, this range uses the same jib arm design which is ideal for maximising the height of lift within a facility.

The jib arm design keeps the weight of the arm itself to a minimum which greatly reduces the effort required for operation, this is then enhanced by precision bearings on the central rotation pivot and also a nylon tyred roller unit, which make our Jib cranes one of the easiest products to use. Final arm alignment can also be achieved using the shim method shown, however this is for finite adjustment only, the main adjustment should be achieved during the column installation.

The standard design offers a rotation capacity of 360° continuously. For applications where a powered lifting device is fitted, we are able to fit either a slip ring or rotary union to maintain this continual rotation. For reduced travel requirements an optional rotation stop can be supplied, which can either be pre fitted or supplied for on site installation.

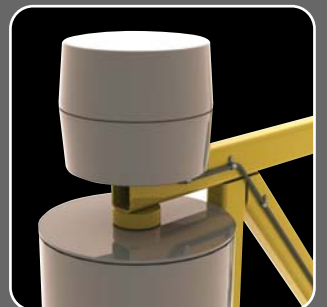
Most of our jibs are suitable for fixing direct to a 6" concrete base, however we request that you refer to our technical data pages for the exact requirements of your selected model.



Rotational Stop



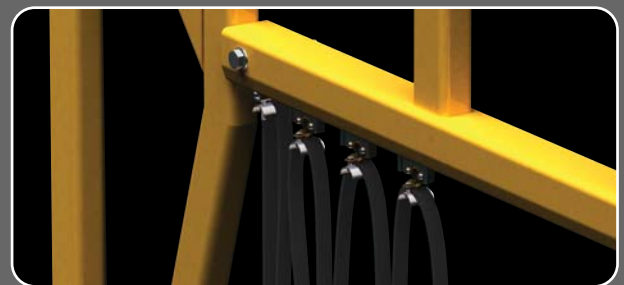
Friction Brake



360° Rotation



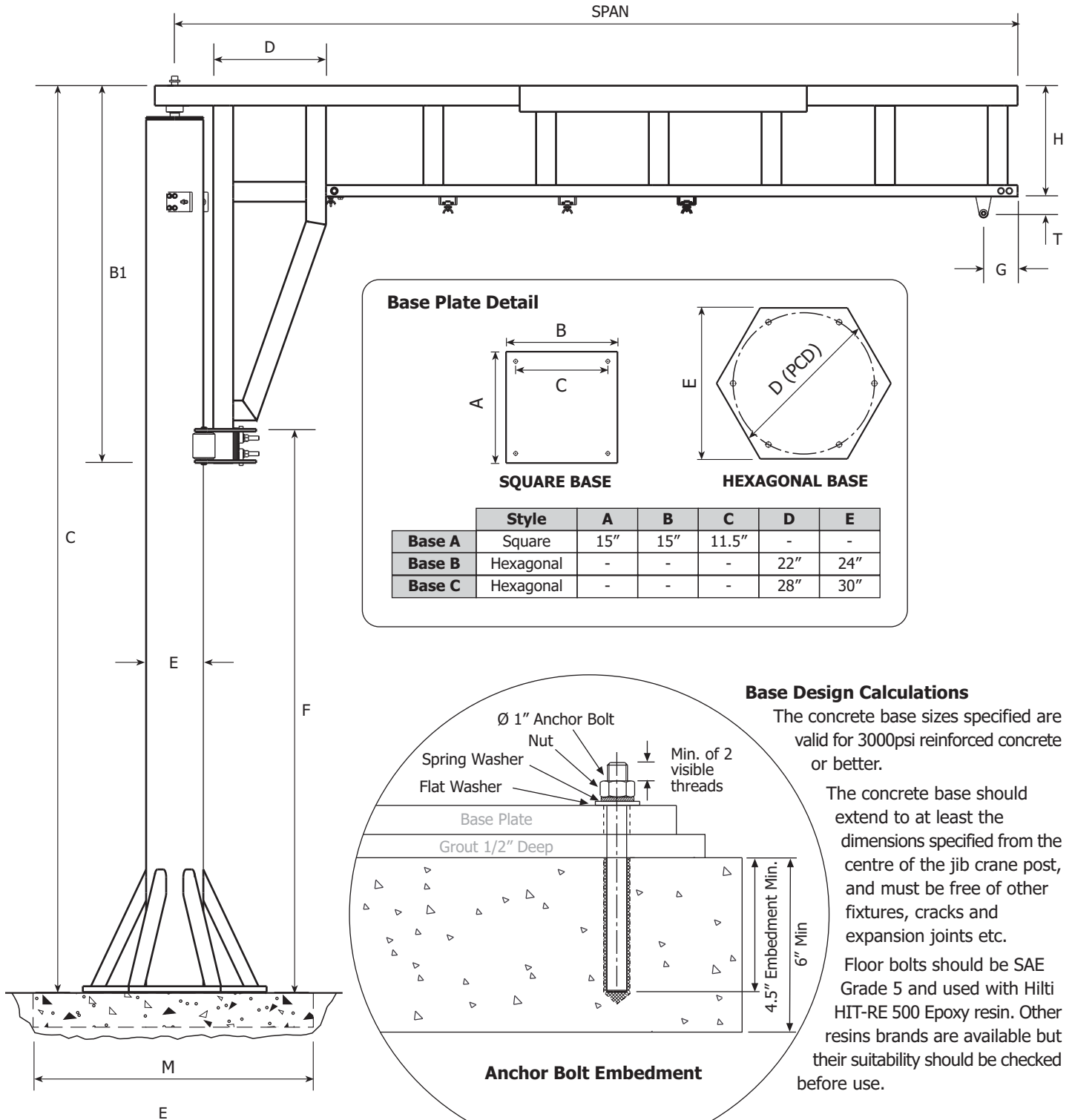
Tagline Festoon (Available for all Jib Cranes)



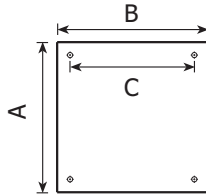
In Track Festoon (Available for all Jib Cranes)

# JIABF3 - FLOOR MOUNTED JIBS

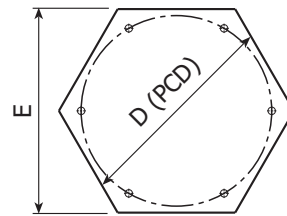
## 360° MAXIMUM ROTATION



### Base Plate Detail



SQUARE BASE



HEXAGONAL BASE

	Style	A	B	C	D	E
Base A	Square	15"	15"	11.5"	-	-
Base B	Hexagonal	-	-	-	22"	24"
Base C	Hexagonal	-	-	-	28"	30"

### Base Design Calculations

The concrete base sizes specified are valid for 3000psi reinforced concrete or better.

The concrete base should extend to at least the dimensions specified from the centre of the jib crane post, and must be free of other fixtures, cracks and expansion joints etc.

Floor bolts should be SAE Grade 5 and used with Hilti HIT-RE 500 Epoxy resin. Other resins brands are available but their suitability should be checked before use.

Anchor Bolt Embedment

# JIABF3 - FLOOR MOUNTED JIBS

## 360° MAXIMUM ROTATION



MODEL NUMBER	SWL	HUB	SPAN	TRACK SIZE	DIM D (ins)	DIM B1 (ins)	DIM F (ins)	DIM H (ins)	DIM G (ins)	DIM T (ins)	DIM C (ins)	DIM W1 (ins)	DIM W2 (ins)	BOLT SIZE (ins)	DIM M (ins)	OVERALL WEIGHT (lbs)
JIABF3-8-8-250	250	8	8	400	10	44	59 3/4	6	5 3/16	2 1/2	106 3/4	10	4 1/2	1	48	316
JIABF3-10-8-250	250	8	10	400	14	54	55 3/4	12	5 3/16	2 1/2	112 3/4	12	4 1/2	1	48	373
JIABF3-12-8-250	250	8	12	400	14	54	55 3/4	12	5 3/16	2 1/2	112 3/4	16	4 1/2	1	48	566
JIABF3-14-8-250	250	8	14	400	18	70	43 3/4	16	5 3/16	2 1/2	116 3/4	20	4 1/2	1	48	634
JIABF3-16-8-250	250	8	16	400	18	70	43 3/4	16	5 3/16	2 1/2	116 3/4	22	4 1/2	1	48	651
JIABF3-8-10-250	250	10	8	400	10	44	83 3/4	6	5 3/16	2 1/2	130 3/4	10	4 1/2	1	48	350
JIABF3-10-10-250	250	10	10	400	14	54	79 3/4	12	5 3/16	2 1/2	136 3/4	12	4 1/2	1	48	407
JIABF3-12-10-250	250	10	12	400	14	54	79 3/4	12	5 3/16	2 1/2	136 3/4	16	4 1/2	1	48	551
JIABF3-14-10-250	250	10	14	400	18	70	67 3/4	16	5 3/16	2 1/2	140 3/4	20	4 1/2	1	48	679
JIABF3-16-10-250	250	10	16	400	18	70	67 3/4	16	5 3/16	2 1/2	140 3/4	22	4 1/2	1	48	695
JIABF3-8-12-250	250	12	8	400	10	44	107 3/4	6	5 3/16	2 1/2	154 3/4	10	4 1/2	1	48	384
JIABF3-10-12-250	250	12	10	400	14	54	103 3/4	12	5 3/16	2 1/2	160 3/4	12	4 1/2	1	48	441
JIABF3-12-12-250	250	12	12	400	14	54	103 3/4	12	5 3/16	2 1/2	160 3/4	16	4 1/2	1	48	656
JIABF3-14-12-250	250	12	14	400	18	70	91 3/4	16	5 3/16	2 1/2	164 3/4	20	4 1/2	1	48	724
JIABF3-16-12-250	250	12	16	400	18	70	91 3/4	16	5 3/16	2 1/2	164 3/4	22	4 1/2	1	48	740
JIABF3-8-8-500	500	8	8	500	14	56	58 3/8	16	6 3/16	3	118 3/8	14	4 1/2	1	60	527
JIABF3-10-8-500	500	8	10	500	14	56	58 3/8	16	6 3/16	3	118 3/8	14	4 1/2	1	60	718
JIABF3-12-8-500	500	8	12	500	18	70	46 3/8	18	6 3/16	3	120 3/8	16	4 1/2	1	60	883
JIABF3-14-8-500	500	8	14	500	18	70	46 3/8	18	6 3/16	3	120 3/8	20	4 1/2	1	60	936
JIABF3-16-8-500	500	8	16	500	18	70	46 3/8	18	6 3/16	3	120 3/8	24	4 1/2	1	60	961
JIABF3-8-10-500	500	10	8	500	14	56	82 3/8	16	6 3/16	3	142 3/8	14	4 1/2	1	60	623
JIABF3-10-10-500	500	10	10	500	14	56	82 3/8	16	6 3/16	3	142 3/8	14	4 1/2	1	60	768
JIABF3-12-10-500	500	10	12	500	18	70	70 3/8	18	6 3/16	3	144 3/8	16	4 1/2	1	60	833
JIABF3-14-10-500	500	10	14	500	18	70	70 3/8	18	6 3/16	3	144 3/8	20	4 1/2	1	60	886
JIABF3-16-10-500	500	10	16	500	18	70	70 3/8	18	6 3/16	3	144 3/8	24	4 1/2	1	60	912
JIABF3-8-12-500	500	12	8	500	14	56	106 3/8	16	6 3/16	3	166 3/8	14	4 1/2	1	60	702
JIABF3-10-12-500	500	12	10	500	14	56	106 3/8	16	6 3/16	3	166 3/8	14	4 1/2	1	60	818
JIABF3-12-12-500	500	12	12	500	18	70	94 3/8	18	6 3/16	3	168 3/8	16	4 1/2	1	60	883
JIABF3-14-12-500	500	12	14	500	18	70	94 3/8	18	6 3/16	3	168 3/8	20	4 1/2	1	60	935
JIABF3-16-12-500	500	12	16	500	18	70	94 3/8	18	6 3/16	3	168 3/8	24	4 1/2	1	60	961
JIABF3-8-8-1000	1000	8	8	600	16	60	55	16	6 7/8	3 11/16	119	16	7	1	66	709
JIABF3-10-8-1000	1000	8	10	600	16	60	55	16	6 7/8	3 11/16	119	16	7	1	72	750
JIABF3-12-8-1000	1000	8	12	600	18	70	51	22	6 7/8	3 11/16	125	18	7	1	72	957
JIABF3-14-8-1000	1000	8	14	600	18	70	51	22	6 7/8	3 11/16	125	22	7	1	72	1034
JIABF3-16-8-1000	1000	8	16	600	18	70	51	22	6 7/8	3 11/16	125	24	7	1	72	1064
JIABF3-8-10-1000	1000	10	8	600	16	60	79	16	6 7/8	3 11/16	143	16	7	1	66	759
JIABF3-10-10-1000	1000	10	10	600	16	60	79	16	6 7/8	3 11/16	143	16	7	1	72	800
JIABF3-12-10-1000	1000	10	12	600	18	70	75	22	6 7/8	3 11/16	149	18	7	1	72	1023
JIABF3-14-10-1000	1000	10	14	600	18	70	75	22	6 7/8	3 11/16	149	22	7	1	72	1101
JIABF3-16-10-1000	1000	10	16	600	18	70	75	22	6 7/8	3 11/16	149	24	7	1	72	1131
JIABF3-8-12-1000	1000	12	8	600	16	60	103	16	6 7/8	3 11/16	167	16	7	1	66	809
JIABF3-10-12-1000	1000	12	10	600	16	60	103	16	6 7/8	3 11/16	167	16	7	1	72	850
JIABF3-12-12-1000	1000	12	12	600	18	70	99	22	6 7/8	3 11/16	173	18	7	1	72	1090
JIABF3-14-12-1000	1000	12	14	600	18	70	99	22	6 7/8	3 11/16	173	22	7	1	72	1168
JIABF3-16-12-1000	1000	12	16	600	18	70	99	22	6 7/8	3 11/16	173	24	7	1	72	1197

### Finish

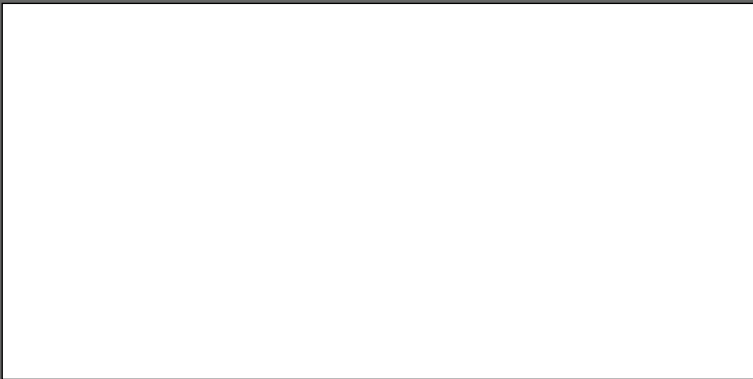
Powder coated for long life protection. Jib Arms in Yellow (RAL1003) and Floor Mounted Posts in Gray (RAL7030). Alternative finishes such as stainless steel, HDG and special paint are also available upon request.

### Service Class

All our workstation jibs are suitable are designed for service class A1, A2 and A3. Higher service class conditions can be accommodated – please contact us if a higher service class is required.

### Design Standards

All our workstation jibs are designed in accordance with 'AISC Steel Construction Manual, OSHA 1910.179 & ANSI B30.11.'



**Toll Free:** 877-830-9803

**Email:** [sales@metreel.com](mailto:sales@metreel.com) **Web:** [www.metreel.com](http://www.metreel.com)

M169-1015

